

Maco C-TS Module

Multi-point security locking system

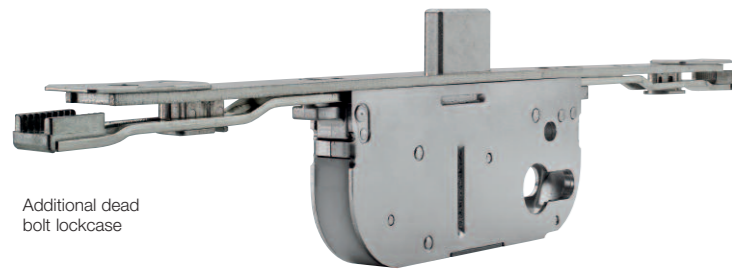
For use on PVCu, timber or composite doors with a 16mm Eurogroove

MACO Protect C-TS Module is a highly secure combined lift lever and split spindle door lock. It enables the fabrication of a wide range of easy to operate door styles from an individual highly secure door lock. The spindle type controls the function of the lock, solid spindle bar for lift lever function and split spindle pack for split spindle function. Utilises the C-TS lockcase, which enhances door flexibility whilst simplifying door preparation.



Unique top hat faceplate

Bull nose option



Additional dead bolt lockcase



Additional hook bolt lockcase

Features and Benefits

- 35mm and 45mm backsets available
- Single door lock for use as a lift lever or split spindle operated door lock (split spindles sold separately)
- Smaller compact lockcases
- Single and double door configurations available
- Dead bolt operated from lever handle reducing force required to lock door
- Non-handed lock design
- Suitable for sprung and unsprung handle sets
- Forged steel dead bolt locking hook bolts for increased security
- High levels of adjustability through adjustable striker plates
- Faceplate lengths available 2100mm and 1750mm for Bull Nose
- Endurance tested to 50,000 operations
- PAS24-2012 capability
- MACO silver look surface treatment tested to 480 hours Class 5 EN 1670 corrosion resistance
- Available in MACO TriCOAT Plus surface technology - phone for details
- 3mm thick faceplate
- Standard 1050mm handle height
- Double door configuration: 1500mm door lock to suit shootbolts - non modular
- Unique top hat faceplate design, 24mm wide to suit 16mm Eurogroove
- Modular design to increase or reduce heights from 1500mm to 2800mm, including:
 - additional hook bolt modules
 - additional dead bolt (cylinder operated) module
 - magnetic cam for alarm systems
 - entry guard unit
- Bull nose, radius end face plate option (20mm)
- 92mm handle to cylinder centres
- 8mm square shaft

Details

Hook bolt

For optimum security

Striker plates

Profile specific
Produced from high quality zinc and steel
Contact Technical for codes

Manufactured from

Produced from high quality zinc and steel

Recommended screws

No.8 countersunk or equivalent.
For TriCOAT finish ensure TriCOAT screws are used

Standards

PAS 24 and BS6375 Parts 1 & 2
BS EN 1670

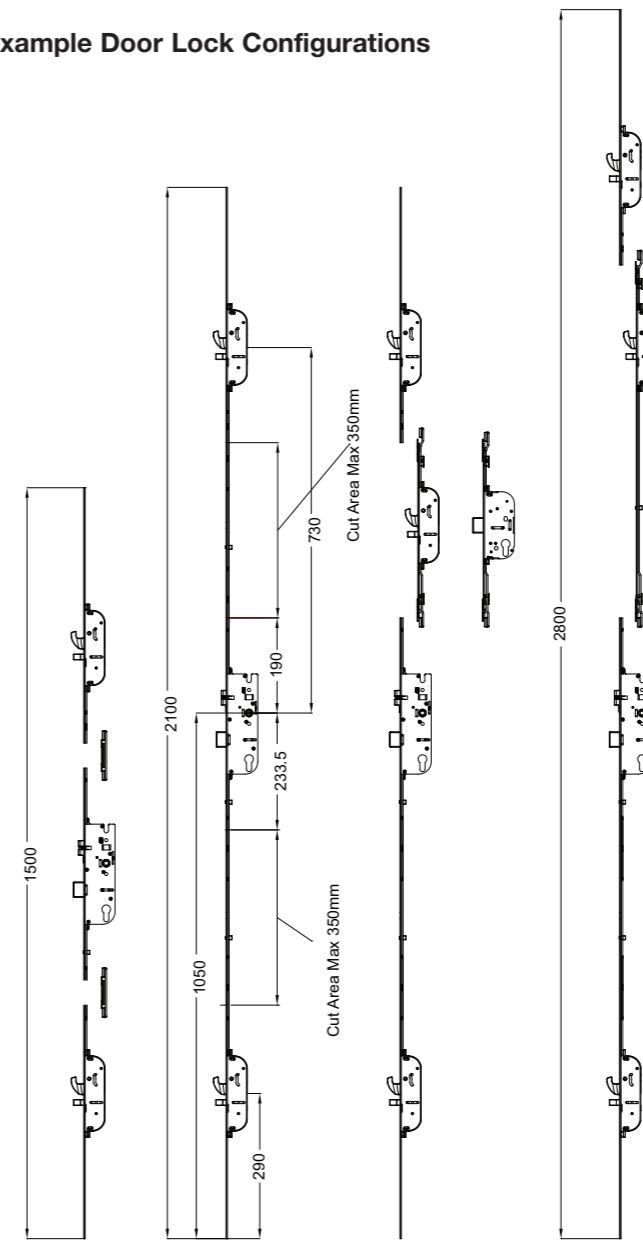
Finishes

Silver chromate
TriCOAT (high corrosion resistance) also available

More information

enquiries@titon.co.uk / 01206 713801

Example Door Lock Configurations



CT-S Module